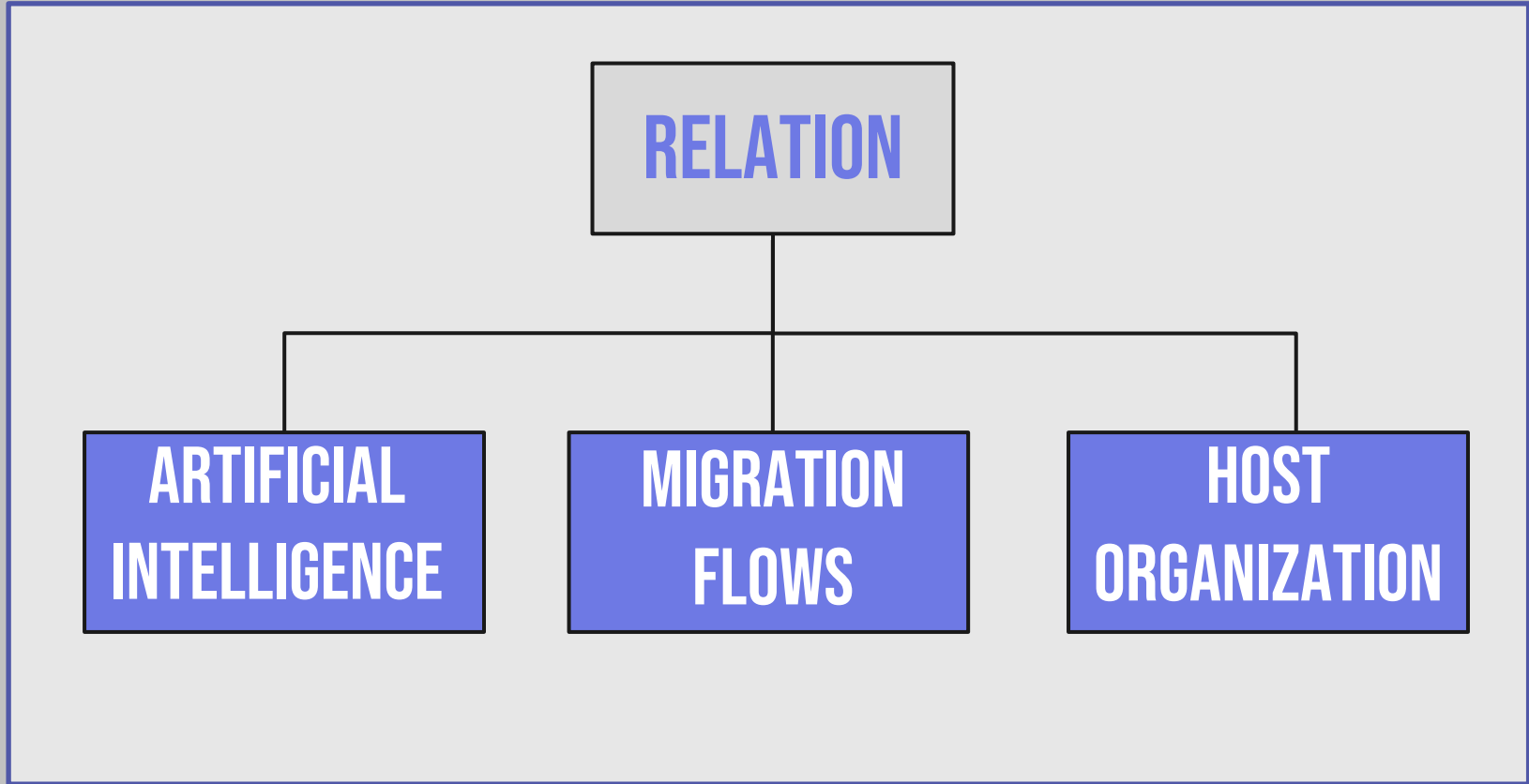


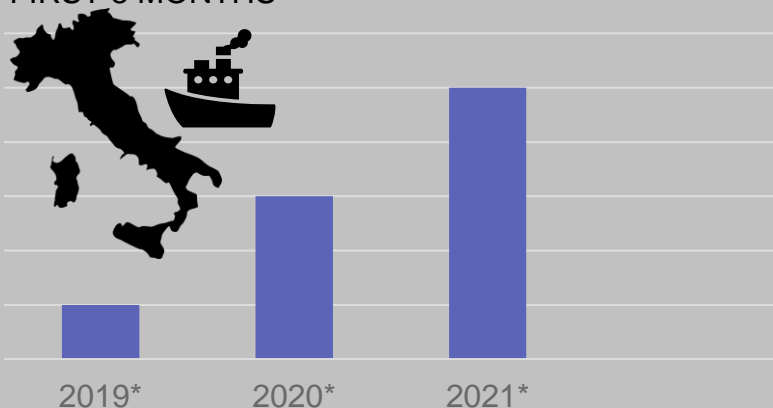
“ARTIFICIAL INTELLIGENCE
AT THE SERVICE OF NEW
GLOBAL EMERGENCIES:
MELTIN’TECH PROJECT”

MELTIN' TECH

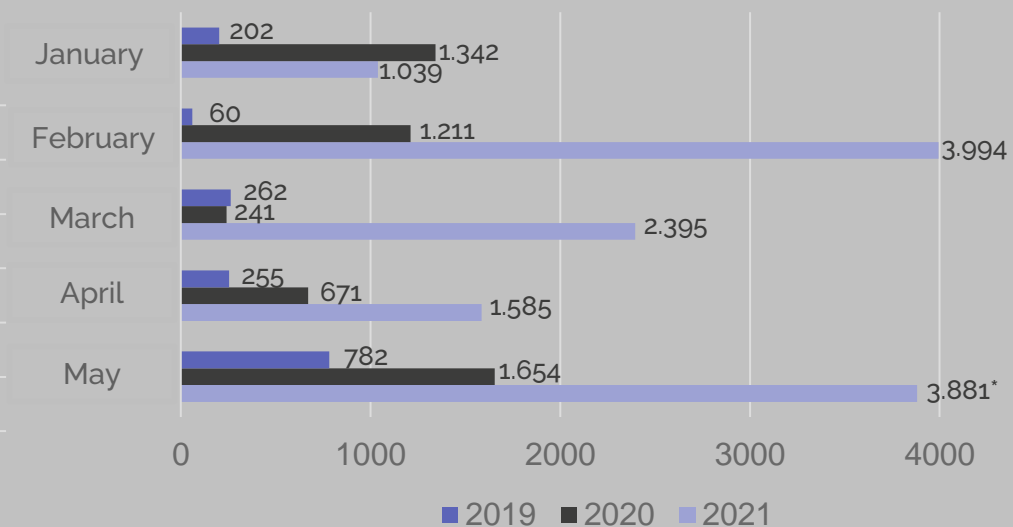


MIGRANTS LANDED IN ITALY

IN THE FIRST 5 MONTHS



Source: Viminale *data updated on the morning of 10 May



POLITICAL INSTABILITY

**ECONOMIC CRISIS, ABSENCE OF
INFRASTRUCTURES AND
BUSINESSES**

UNEMPLOYMENT

**BACKWARDNESS OF THE
SECONDARY AND TERTIARY
SECTOR**

APP FUNCTIONS



INDICATION

of the main places of interest, customs, habits of the place where they will settle

PLACEMENT

Active social integration and employment based on your CV

SUPPORT

Linguistic mediation and communication

APP STRUCTURE

SECTION 1

Personal data, skills and qualifications, languages spoken, computer education



SECTION 2

Historical information, uses and customs of the place



SECTION 4

Direct connection with the municipality of belonging and local associations (access by these entities to the services of the app)



SECTION 3

Places of primary interest, hospitals, places of food, worship, computer rooms, etc.



**THE APPLICATION AT THE
SERVICE OF MUNICIPALITIES OF
THE REGION AND
METROPOLITAN CITY**



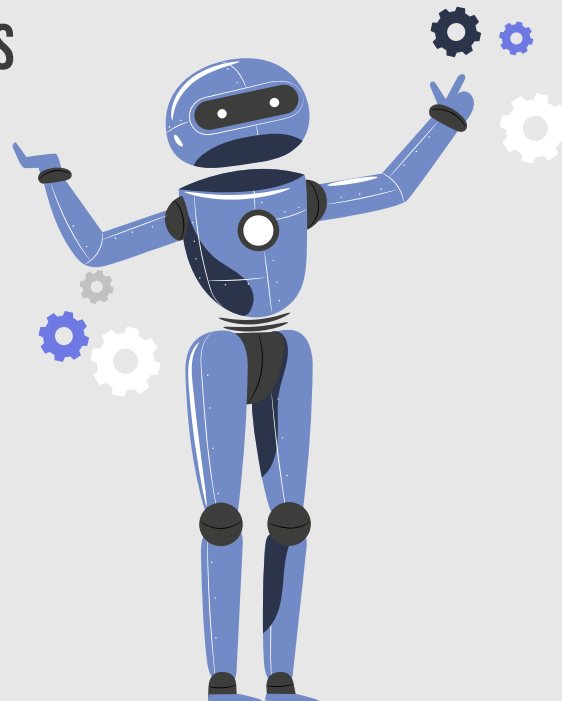
MELTIN' TECH FROM ANOTHER POINT OF VIEW >>>>

**THE APPLICATION AT THE SERVICE OF MUNICIPALITIES
OF THE REGION AND METROPOLITAN CITY**



RECRUITING

Through the data made
available by the migrant



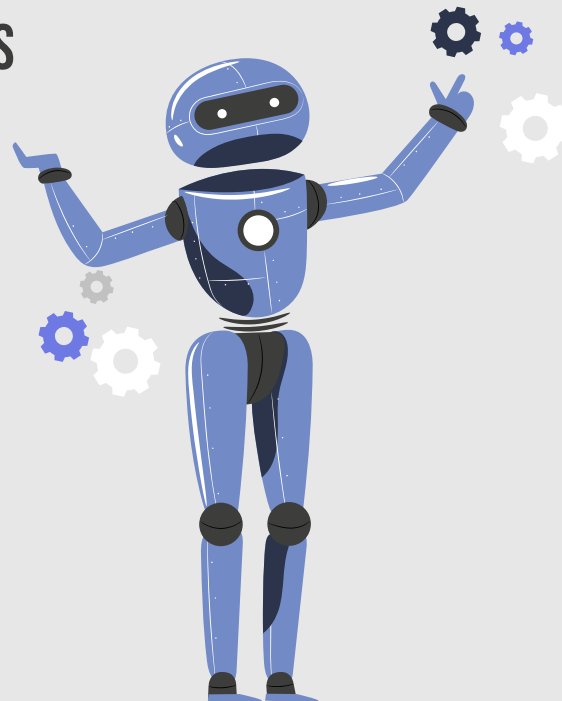
MELTIN' TECH FROM ANOTHER POINT OF VIEW >>>>

THE APPLICATION AT THE SERVICE OF MUNICIPALITIES OF THE REGION AND METROPOLITAN CITY



EVENTS

To encourage integration
and the exchange of ideas



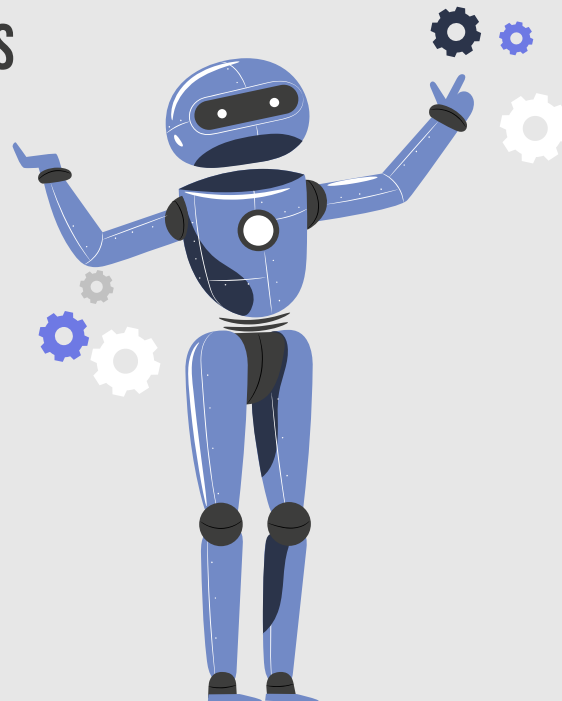
MELTIN' TECH FROM ANOTHER POINT OF VIEW >>>>

**THE APPLICATION AT THE SERVICE OF MUNICIPALITIES
OF THE REGION AND METROPOLITAN CITY**



ORIENTATION

Personalized according to the skills,
attitudes and skills of the subject involved



GOAL SETTING

**KNOWLEDGE AND
MANAGEMENT
OF AI**

**DATABASE OF
MIGRANT'S
SKILLS**

**SKILLS
DEVELOPMENT
USING
TECHNOLOGICAL
TOOLS**



ARTIFICIAL INTELLIGENCE (AI)

**ROAD TO A
SMARTLY
MIXED WORK.**

